



COBIE 101 session 18. coordinate worksheet

audience

this course is for public government officials and business partners who need to understand how COBIE is implemented on their contracts.

prerequisite

COBIE 101. session 4. cobie general overview

objectives

describe the contents of the COBIE Coordinate worksheet

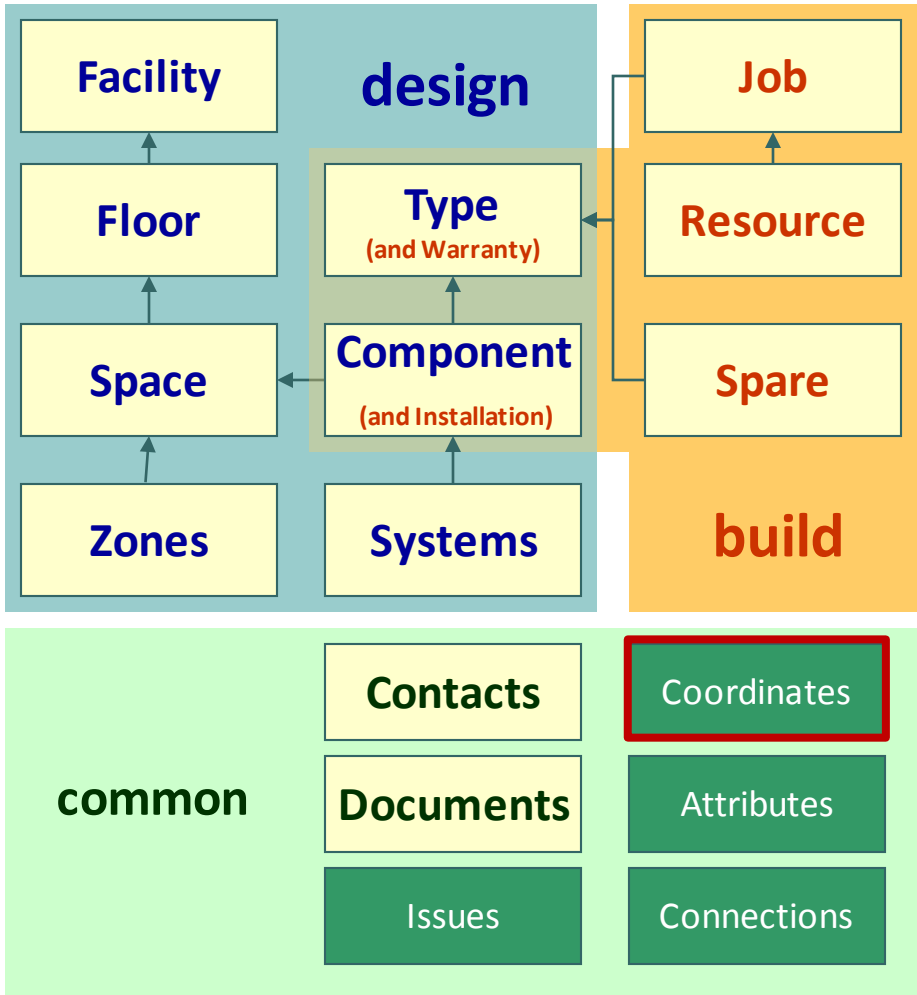
coordinate worksheet

very simple geometry

- 3-d rectangle
- square
- line
- point

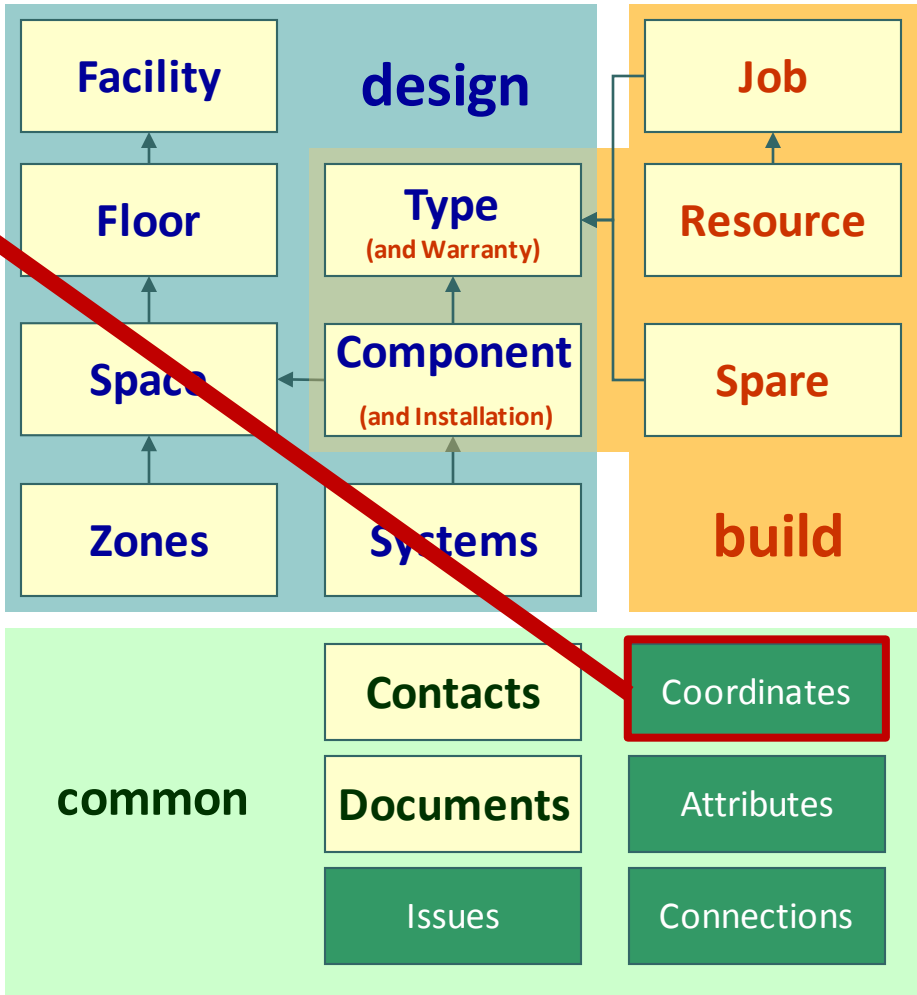
applied where appropriate

- facility
- floor
- space
- component



coordinate worksheet

- Name
- CreatedBy
- CreatedOn
- Category
- SheetName
- RowName
- CoordinateXAxis
- CoordinateYAxis
- CoordinateZAxis
- ExtSystem
- ExtIdentifier
- ExtObject





unique name

Name	CreatedBy	CreatedOn	Category	SheetName	RowName	CoordinateXAxis	CoordinateYAxis	CoordinateZAxis	ExtSystem	ExtIdentifier	ExtObject
e1	bjerold@je.com	2009-08-21T14:36:01	point	Floor	Roof	0.00	0.00	44.25		IfcCartesianPoint	
101	bjerold@je.com	2009-08-21T14:36:01	box-lowerleft	Space	101	45.00	-33.00	0.00		IfcCartesianPoint	
101	bjerold@je.com	2009-08-21T14:36:01	box-upperright	Space	101	51.00	-24.00	15.00		IfcCartesianPoint	
102	bjerold@je.com	2009-08-21T14:36:01	box-lowerleft	Space	102	45.00	-36.00	0.00		IfcCartesianPoint	
102	bjerold@je.com	2009-08-21T14:36:01	box-upperright	Space	102	51.00	-33.00	15.00		IfcCartesianPoint	
103	bjerold@je.com	2009-08-21T14:36:01	box-lowerleft	Space	103	39.00	-36.00	0.00		IfcCartesianPoint	
103	bjerold@je.com	2009-08-21T14:36:01	box-upperright	Space	103	45.00	-32.00	15.00		IfcCartesianPoint	
104	bjerold@je.com	2009-08-21T14:36:01	box-lowerleft	Space	104	20.00	-36.00	0.00		IfcCartesianPoint	
104	bjerold@je.com	2009-08-21T14:36:01	box-upperright	Space	104	39.00	-24.00	15.00		IfcCartesianPoint	
105	bjerold@je.com	2009-08-21T14:36:01	box-lowerleft	Space	105	39.00	-32.00	0.00		IfcCartesianPoint	
105	bjerold@je.com	2009-08-21T14:36:01	box-upperright	Space	105	45.00	-24.00	15.00		IfcCartesianPoint	
106	bjerold@je.com	2009-08-21T14:36:01	box-lowerleft	Space	106	72.00	-44.00	0.00		IfcCartesianPoint	
106	bjerold@je.com	2009-08-21T14:36:01	box-upperright	Space	106	96.00	-38.00	10.00		IfcCartesianPoint	
100A	bjerold@je.com	2009-08-21T14:36:01	box-lowerleft	Space	100A	0.00	-24.00	0.00		IfcCartesianPoint	
100A	bjerold@je.com	2009-08-21T14:36:01	box-upperright	Space	100A	120.00	0.00	44.25		IfcCartesianPoint	
100B	bjerold@je.com	2009-08-21T14:36:01	box-lowerleft	Space	100B	51.00	-36.00	0.00		IfcCartesianPoint	

unique name combination
name & category

authorship information

Name	CreatedBy	CreatedOn	Category	SheetName	RowName	CoordinateXAxis	CoordinateYAxis	CoordinateZAxis	ExtSystem	ExtIdentifier	ExtObject
e1	bjerold@je.com	2009-08-21T14:36:01	point	Floor	Roof	0.00	0.00	44.25		lfcCartesianPoint	
101	bjerold@je.com	2009-08-21T14:36:01	box-lowerleft	Space	101	45.00	-33.00	0.00		lfcCartesianPoint	
101	bjerold@je.com	2009-08-21T14:36:01	box-upperright	Space	101	51.00	-24.00	15.00		lfcCartesianPoint	
102	bjerold@je.com	2009-08-21T14:36:01	box-lowerleft	Space	102	45.00	-36.00	0.00		lfcCartesianPoint	
102	bjerold@je.com	2009-08-21T14:36:01	box-upperright	Space	102	51.00	-33.00	15.00		lfcCartesianPoint	
103	bjerold@je.com	2009-08-21T14:36:01	box-lowerleft	Space	103	39.00	-36.00	0.00		lfcCartesianPoint	
103	bjerold@je.com	2009-08-21T14:36:01	box-upperright	Space	103	45.00	-32.00	15.00		lfcCartesianPoint	
104	bjerold@je.com	2009-08-21T14:36:01	box-lowerleft	Space	104	20.00	-36.00	0.00		lfcCartesianPoint	
104	bjerold@je.com	2009-08-21T14:36:01	box-upperright	Space	104	26.00	-33.00	15.00		lfcCartesianPoint	
105	bjerold@je.com	2009-08-21T14:36:01	box-lowerleft	Space	105	45.00	-36.00	0.00		lfcCartesianPoint	
105	bjerold@je.com	2009-08-21T14:36:01	box-upperright	Space	105	51.00	-33.00	15.00		lfcCartesianPoint	
106	bjerold@je.com	2009-08-21T14:36:01	box-lowerleft	Space	106	45.00	-36.00	0.00		lfcCartesianPoint	
106	bjerold@je.com	2009-08-21T14:36:01	box-upperright	Space	106	51.00	-33.00	15.00		lfcCartesianPoint	
100A	bjerold@je.com	2009-08-21T14:36:01	box-lowerleft	Space	100A	0.00	-24.00	0.00		lfcCartesianPoint	
100A	bjerold@je.com	2009-08-21T14:36:01	box-upperright	Space	100A	120.00	0.00	44.25		lfcCartesianPoint	
100B	bjerold@je.com	2009-08-21T14:36:01	box-lowerleft	Space	100B	51.00	-36.00	0.00		lfcCartesianPoint	

author email
date-time stamp



external category

Name	CreatedBy	CreatedOn	Category	SheetName	RowName	CoordinateXAxis	CoordinateYAxis	CoordinateZAxis	ExtSystem	ExtIdentifier	ExtObject
e1	bjerold@je.com	2009-08-21T14:36:01	point	Floor	Roof	0.00	0.00	44.25		lfcCartesianPoint	
101	bjerold@je.com	2009-08-21T14:36:01	box-lowerleft	Space	101	45.00	-33.00	0.00		lfcCartesianPoint	
101	bjerold@je.com	2009-08-21T14:36:01	box-upperright	Space	101	51.00	-24.00	15.00		lfcCartesianPoint	
102	bjerold@je.com	2009-08-21T14:36:01	box-lowerleft	Space	102	45.00	-36.00	0.00		lfcCartesianPoint	
102	bjerold@je.com	2009-08-21T14:36:01	box-upperright	Space	102	51.00	-33.00	15.00		lfcCartesianPoint	
103	bjerold@je.com	2009-08-21T14:36:01	box-lowerleft	Space	103	39.00	-36.00	0.00		lfcCartesianPoint	
103	bjerold@je.com	2009-08-21T14:36:01	box-upperright	Space	103	45.00	-32.00	15.00		lfcCartesianPoint	
104	bjerold@je.com	2009-08-21T14:36:01	box-lowerleft	Space	104	20.00	-36.00	0.00		lfcCartesianPoint	
104	bjerold@je.com	2009-08-21T14:36:01	box-upperright	Space							
105	bjerold@je.com	2009-08-21T14:36:01	box-lowerleft	Space							
105	bjerold@je.com	2009-08-21T14:36:01	box-upperright	Space							
106	bjerold@je.com	2009-08-21T14:36:01	box-lowerleft	Space							
106	bjerold@je.com	2009-08-21T14:36:01	box-upperright	Space							
100A	bjerold@je.com	2009-08-21T14:36:01	box-lowerleft	Space	100A	0.00	-24.00	0.00		lfcCartesianPoint	
100A	bjerold@je.com	2009-08-21T14:36:01	box-upperright	Space	100A	120.00	0.00	44.25		lfcCartesianPoint	
100B	bjerold@je.com	2009-08-21T14:36:01	box-lowerleft	Space	100B	51.00	-36.00	0.00		lfcCartesianPoint	

what kind of shape is it?
some shapes require 2 points!



internal category

Name	CreatedBy	CreatedOn	Category	SheetName	RowName	CoordinateXAxis	CoordinateYAxis	CoordinateZAxis	ExtSystem	ExtIdentifier	ExtObject
e1	bjerold@je.com	2009-08-21T14:36:01	point	Floor	Roof	0.00	0.00	44.25		lfcCartesianPoint	
101	bjerold@je.com	2009-08-21T14:36:01	box-lowerleft	Space	101	45.00	-33.00	0.00		lfcCartesianPoint	
101	bjerold@je.com	2009-08-21T14:36:01	box-upperright	Space	101	51.00	-24.00	15.00		lfcCartesianPoint	
102	bjerold@je.com	2009-08-21T14:36:01	box-lowerleft	Space	102	45.00	-36.00	0.00		lfcCartesianPoint	
102	bjerold@je.com	2009-08-21T14:36:01	box-upperright	Space	102	51.00	-33.00	15.00		lfcCartesianPoint	
103	bjerold@je.com	2009-08-21T14:36:01	box-lowerleft	Space	103	39.00	-36.00	0.00		lfcCartesianPoint	
				Space	103	45.00	-32.00	15.00		lfcCartesianPoint	
				Space	104	20.00	-36.00	0.00		lfcCartesianPoint	
				Space	104	39.00	-24.00	15.00		lfcCartesianPoint	
				Space	105	39.00	-32.00	0.00		lfcCartesianPoint	
				Space	105	45.00	-24.00	15.00		lfcCartesianPoint	
106	bjerold@je.com	2009-08-21T14:36:01	box-lowerleft	Space	106	72.00	-44.00	0.00		lfcCartesianPoint	
106	bjerold@je.com	2009-08-21T14:36:01	box-upperright	Space	106	96.00	-38.00	10.00		lfcCartesianPoint	
100A	bjerold@je.com	2009-08-21T14:36:01	box-lowerleft	Space	100A	0.00	-24.00	0.00		lfcCartesianPoint	
100A	bjerold@je.com	2009-08-21T14:36:01	box-upperright	Space	100A	120.00	0.00	44.25		lfcCartesianPoint	
100B	bjerold@je.com	2009-08-21T14:36:01	box-lowerleft	Space	100B	51.00	-36.00	0.00		lfcCartesianPoint	

to what does this coordinate apply?
enter the COBIE sheet



internal category

Name	CreatedBy	CreatedOn	Category	SheetName	RowName	CoordinateXAxis	CoordinateYAxis	CoordinateZAxis	ExtSystem	ExtIdentifier	ExtObject
e1	bjerold@je.com	2009-08-21T14:36:01	point	Floor	Roof	0.00	0.00	44.25		lfcCartesianPoint	
101	bjerold@je.com	2009-08-21T14:36:01	box-lowerleft	Space	101	45.00	-33.00	0.00		lfcCartesianPoint	
101	bjerold@je.com	2009-08-21T14:36:01	box-upperright	Space	101	51.00	-24.00	15.00		lfcCartesianPoint	
102	bjerold@je.com	2009-08-21T14:36:01	box-lowerleft	Space	102	45.00	-36.00	0.00		lfcCartesianPoint	
102	bjerold@je.com	2009-08-21T14:36:01	box-upperright	Space	102	51.00	-33.00	15.00		lfcCartesianPoint	
103	bjerold@je.com	2009-08-21T14:36:01	box-lowerleft	Space	103	39.00	-36.00	0.00		lfcCartesianPoint	
103	bjerold@je.com	2009-08-21T14:36:01	box-upperright	Space	103	45.00	-32.00	15.00		lfcCartesianPoint	
104	bjerold@je.com	2009-08-21T14:36:01	box-lowerleft	Space	104	20.00	-36.00	0.00		lfcCartesianPoint	
104	bjerold@je.com	2009-08-21T14:36:01	box-upperright	Space	104	39.00	-24.00	15.00		lfcCartesianPoint	
105	bjerold@je.com	2009-08-21T14:36:01	box-lowerleft	Space	105	39.00	-32.00	0.00		lfcCartesianPoint	
105	bjerold@je.com	2009-08-21T14:36:01	box-upperright	Space	105	45.00	-24.00	15.00		lfcCartesianPoint	
106	bjerold@je.com	2009-08-21T14:36:01	box-lowerleft	Space	106	72.00	-44.00	0.00		lfcCartesianPoint	
106	bjerold@je.com	2009-08-21T14:36:01	box-upperright	Space	106	96.00	-38.00	10.00		lfcCartesianPoint	
100A	bjerold@je.com	2009-08-21T14:36:01	box-lowerleft	Space	100A	0.00	-24.00	0.00		lfcCartesianPoint	
100A	bjerold@je.com	2009-08-21T14:36:01	box-upperright	Space	100A	120.00	0.00	44.25		lfcCartesianPoint	
100B	bjerold@je.com	2009-08-21T14:36:01	box-lowerleft	Space	100B	51.00	-36.00	0.00		lfcCartesianPoint	

to what does this coordinate apply?
enter the COBIE row

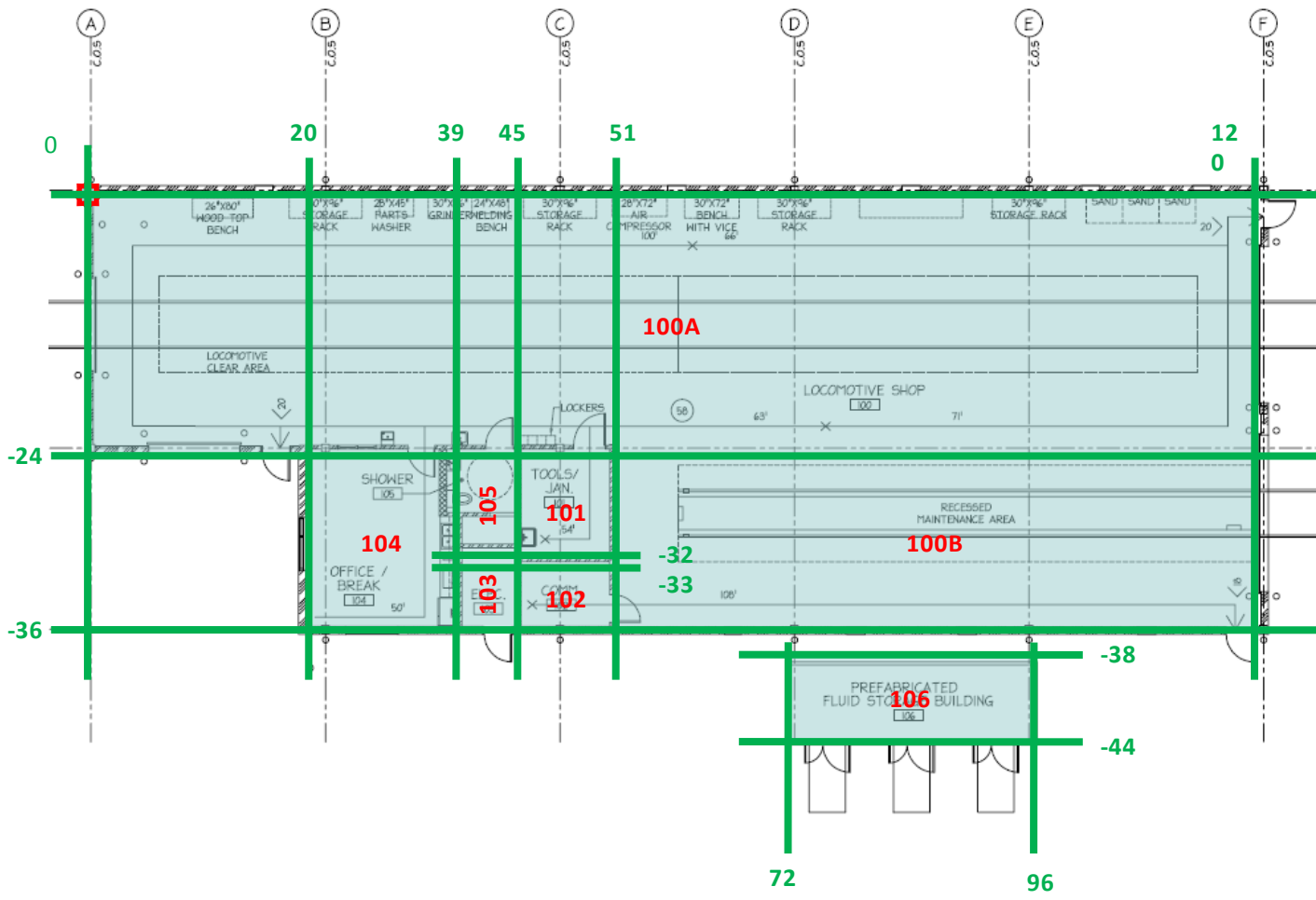
descriptive information

Name	CreatedBy	CreatedOn	Category	SheetName	RowName	CoordinateXAxis	CoordinateYAxis	CoordinateZAxis	ExtSystem	ExtIdentifier	ExtObject
e1	bjerold@je.com	2009-08-21T14:36:01	point	Floor	Roof	0.00	0.00	44.25		IfcCartesianPoint	
101	bjerold@je.com	2009-08-21T14:36:01	box-lowerleft	Space	101	45.00	-33.00	0.00		IfcCartesianPoint	
101	bjerold@je.com	2009-08-21T14:36:01	box-upperright	Space	101	51.00	-24.00	15.00		IfcCartesianPoint	
102	bjerold@je.com	2009-08-21T14:36:01	box-lowerleft	Space	102	45.00	-36.00	0.00		IfcCartesianPoint	
102	bjerold@je.com	2009-08-21T14:36:01	box-upperright	Space	102	51.00	-33.00	15.00		IfcCartesianPoint	
103	bjerold@je.com	2009-08-21T14:36:01	box-lowerleft	Space	103	39.00	-36.00	0.00		IfcCartesianPoint	
103	bjerold@je.com	2009-08-21T14:36:01	box-upperright	Space	103	45.00	-32.00	15.00		IfcCartesianPoint	
104	bjerold@je.com	2009-08-21T14:36:01	box-lowerleft	Space	104	20.00	-36.00	0.00		IfcCartesianPoint	
104	bjerold@je.com	2009-08-21T14:36:01	box-upperright	Space	104	39.00	-24.00	15.00		IfcCartesianPoint	
105	bjerold@je.com	2009-08-21T14:36:01	box-lowerleft	Space	105	39.00	-32.00	0.00		IfcCartesianPoint	
105	bjerold@je.com	2009-08-21T14:36:01	box-upperright	Space	105	45.00	-24.00	15.00		IfcCartesianPoint	
106	bjerold@je.com	2009-08-21T14:36:01	box-lowerleft	Space	106	72.00	-44.00	0.00		IfcCartesianPoint	
106	bjerold@je.com	2009-08-21T14:36:01	box-upperright	Space	106	96.00	-38.00	10.00		IfcCartesianPoint	
100A	bjerold@je.com	2009-08-21T14:36:01	box-lowerleft	Space	100A	0.00	-24.00	0.00		IfcCartesianPoint	
100A	bjerold@je.com	2009-08-21T14:36:01	box-upperright	Space	100A	120.00	0.00	44.25		IfcCartesianPoint	
100B	bjerold@je.com	2009-08-21T14:36:01	box-lowerleft	Space	100B	51.00	-36.00	0.00		IfcCartesianPoint	

x, y, and z
using relative reference rules from IFC

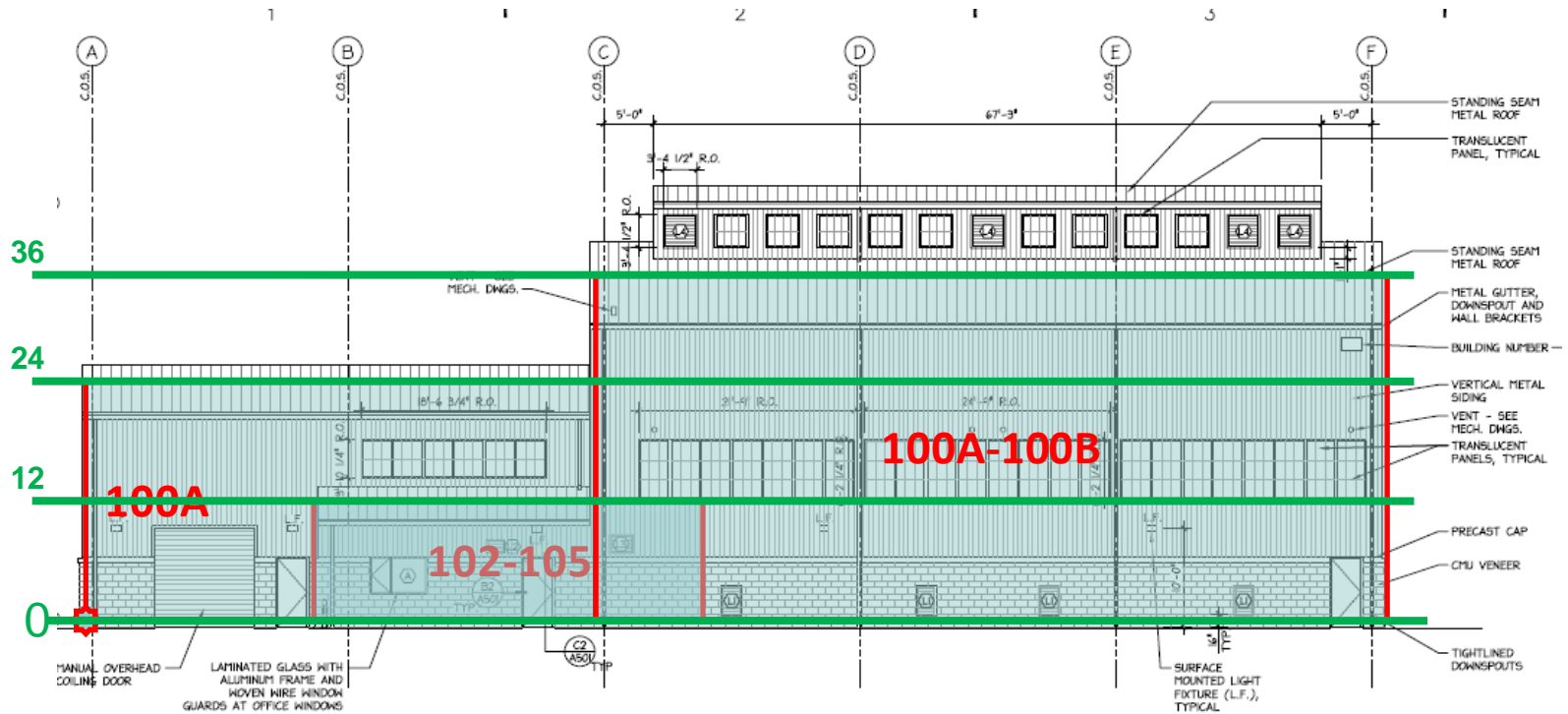


descriptive information: x and y axis





descriptive information: z axis



automated system reference

Name	CreatedBy	CreatedOn	Category	SheetName	RowName	CoordinateXAxis	CoordinateYAxis	CoordinateZAxis	ExtSystem	ExtIdentifier	ExtObject
e1	bjerold@je.com	2009-08-21T14:36:01	point	Floor	Roof	0.00	0.00	44.25		lfcCartesianPoint	
101	bjerold@je.com	2009-08-21T14:36:01	box-lowerleft	Space	101	45.00	-33.00	0.00		lfcCartesianPoint	
101	bjerold@je.com	2009-08-21T14:36:01	box-upperright	Space	101	51.00	-24.00	15.00		lfcCartesianPoint	
102	bjerold@je.com	2009-08-21T14:36:01	box-lowerleft	Space	102	45.00	-36.00	0.00		lfcCartesianPoint	
102	bjerold@je.com	2009-08-21T14:36:01	box-upperright	Space	102	51.00	-33.00	15.00		lfcCartesianPoint	
103	bjerold@je.com	2009-08-21T14:36:01	box-lowerleft	Space	103	39.00	-36.00	0.00		lfcCartesianPoint	
103	bjerold@je.com	2009-08-21T14:36:01	box-upp					0.00		lfcCartesianPoint	
104	bjerold@je.com	2009-08-21T14:36:01	box-low					0.00		lfcCartesianPoint	
104	bjerold@je.com	2009-08-21T14:36:01	box-upp					0.00		lfcCartesianPoint	
105	bjerold@je.com	2009-08-21T14:36:01	box-low					0.00		lfcCartesianPoint	
105	bjerold@je.com	2009-08-21T14:36:01	box-upp					0.00		lfcCartesianPoint	
106	bjerold@je.com	2009-08-21T14:36:01	box-lowerleft	Space	106	72.00	-44.00	0.00		lfcCartesianPoint	
106	bjerold@je.com	2009-08-21T14:36:01	box-upperright	Space	106	96.00	-38.00	10.00		lfcCartesianPoint	
100A	bjerold@je.com	2009-08-21T14:36:01	box-lowerleft	Space	100A	0.00	-24.00	0.00		lfcCartesianPoint	
100A	bjerold@je.com	2009-08-21T14:36:01	box-upperright	Space	100A	120.00	0.00	44.25		lfcCartesianPoint	
100B	bjerold@je.com	2009-08-21T14:36:01	box-lowerleft	Space	100B	51.00	-36.00	0.00		lfcCartesianPoint	

external system information
(if automatically created)



COBIE 101 session 18. coordinate worksheet

audience

this course is for public government officials and business partners who need to understand how COBIE is implemented on their contracts.

prerequisite

COBIE 101. session 4. cobie general overview

objectives

describe the contents of the COBIE Coordinate worksheet